



LUMINOUS PPF COLORED

Luminous paint protection films offer advanced protection for everyday vehicle use, preserving OEM paint from environmental and road conditions like stone chips, scratches, and bird droppings. Our next-generation films are designed to withstand extreme outdoor weathering, backed by warranties of up to 10 years. Coverage for manufacturing defects. Ensure your car's paintwork stays factory-fresh with our exceptional stain resistance and self-healing capabilities.

PRODUCT FEATURES



DUAL PROTECTION & STYLE

Combines premium paint protection with a custom finish, giving vehicles a fresh look while safeguarding the paint underneath.



ADVANCED SELF-HEALING

Equipped with a self-healing topcoat that removes minor scratches and swirl marks when exposed to heat or sunlight.



HIGH-GLOSS OR MATTE FINISHES

Available in various finishes, gloss, matte, satin, metallic, or color-shifting, to match unique design preferences.



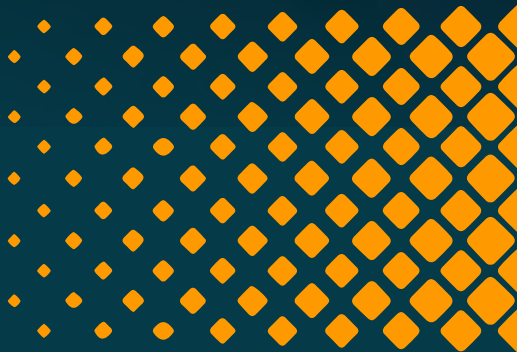
IMPACT & CHIP RESISTANCE

Durable TPU construction provides excellent resistance against stone chips, road debris, and minor abrasions.



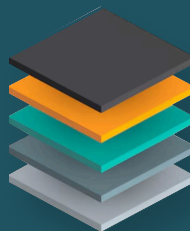
UV & STAIN RESISTANCE

Blocks harmful UV rays to prevent paint fading and discoloration. Resists stains from bird droppings, tree sap, and road grime.



PRODUCT STRUCTURE

PROTECTIVE FILM
COATING
BASE FILM
COLOR FILM
PSA GLUE
LINER



For more information visit:
www.luminous-me.com

WARRANTY BY THE MANUFACTURER

From The Date Of Purchase, The Manufacturer Guarantees That Our Luminous Paint Protection Film (PPF), Professionally Sold And Applied, Is Free From Material Defects When Used And Maintained As Intended Under Normal Conditions. Luminous Products Will Retain Their Properties Without Experiencing Cracking, Delamination, Discoloration Or Yellowing.

Conditions For Warranty Coverage:

- The Painted Surfaces Must Be Original Equipment Manufacturer (OEM) Originals And Fully Cured. The Installation Must Be Carried Out By An Approved Installer.
- The Warranty Explicitly Excludes Film Applied To Non-Painted Surfaces Such As Headlights, Chrome, Or Carbon-Fiber Trim.

Warranty Claims:

- If The Film Fails To Meet The Warranty Terms During Normal Use With Proper Care And Maintenance Within The Warranty Period, The Manufacturer Will Provide Replacement Film To The Installer At No Cost To The Purchaser.
- Any Claims Regarding Our Products Should Be Promptly Reported To The Manufacturer As Soon As They Become Known To The Purchaser. Proof Of Purchase Will Be Required By The Approved Installer To Support Any Warranty Claim

Limitations And Disclaimers:

- The Manufacturer Disclaims Any Liability For Incidental, Special, Consequential, Or Punitive Damages Arising From Defects In The Covered Product.
- The Manufacturer Excludes All Other Express Or Implied Warranties, Including Warranties Of Merchantability And Fitness For A Particular Purpose.
- The Manufacturer's Sole Obligation To The Purchaser, Whether Based On Contract, Negligence, Tort, Or Otherwise, Is As Provided Herein, And Remedies And Damages Are As Specified Herein.
- It Is Essential To Adhere To All Recommended Care And Maintenance Instructions.
- Limited Warranty Coverage Is Void If The Product Has Been Subjected To Abuse Or Improper Care.
- The Manufacturer Assumes No Liability For Damage To The Film Or The Vehicle Resulting From Improper Care.

| TEST ITEM | TEST METHOD | STATED VALUE |
|-----------------------|------------------|-------------------------|
| Total thickness | Micrometer | 7.5 Mil |
| Gloss (60°) | GB 8807 | ≥90 (%) |
| G weight (Finished) | GB/T 4669 | 355~395 (g/m2) |
| G weight (Glue) | GB/T 4669 | 25~30 (g/m2) |
| Elongation at break | GB/T 1040.1 | 70~95 (%) |
| Shrinkage (MD) | FTM 14 | ≤0.5 (mm) |
| Shrinkage (TD) | FTM 14 | ≤0.4 (mm) |
| Release force | GB/T 2792 | ≤0.35 (N/25mm) |
| Tack | FTM 9 | ≥6 (N/25mm) |
| 24h, 180°Peel | GB/T 2792 | ≥15 (N/25mm) |
| Self-Healing function | (0.1mm)Brush&Hot | Hot |
| Water contact angle | DL/T864 | ≥103° |
| Yellowness Index | QUV | ≤2 |
| Anti acid | Lab test | oxalate 72 (Pass) |
| Anti-fouling | Lab test | Strongest Marker (Pass) |
| Liner bubbles | visual test | visually invisible |
| Dust | visual test | visually invisible |
| Coated dump | visual test | visually invisible |
| Glue line | visual test | visually invisible |
| Base | - | TPU |
| Glue Type | - | Ashland |
| Length | - | 15 M |
| Raw Material | - | Lubrizol |
| Warranty | - | 5 Years |

