

LUMINOUS PPF PHANTOM

Luminous paint protection films offer advanced protection for everyday vehicle use, preserving OEM paint from environmental and road conditions like stone chips, scratches, and bird droppings. Our next-generation films are designed to withstand extreme outdoor weathering, backed by warranties of up to 10 years. Coverage for manufacturing defects. Ensure your car's paintwork stays factory-fresh with our exceptional stain resistance and self-healing capabilities.

PRODUCT FEATURES



PROTECT PAINT FROM DEBRIS

Luminous provides long-lasting protection from weather, abrasion, debris, and more.



NON-YELLOWING

Luminous proprietary film formulation will not yellow from UV exposure, ensuring protected areas are nearly invisible.



EASY TO REMOVE

Luminous PPF adopts acrylic adhesive. It's easy to remove the film whenever you are ready, without damage to the original vehicle's Paint.



SELF-HEALING TOPCOAT

Luminous will self-heal light, medium scratches & swirl marks under the exposure of the sun light.



DISCOLORATION & STAIN RESISTANT

Luminous is stain resistant & will maintain clarity under the harshest conditions, protect your car paint from spots or splatches from contaminants.

PRODUCT STRUCTURE

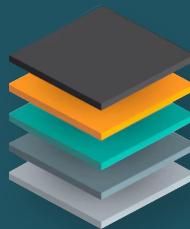
CAP SHEET

COATING

BASE FILM

GLUE

LINER



For more information visit:

www.luminous-me.com

WARRANTY BY THE MANUFACTURER

From The Date Of Purchase, The Manufacturer Guarantees That Our Luminous Paint Protection Film (PPF), Professionally Sold And Applied, Is Free From Material Defects When Used And Maintained As Intended Under Normal Conditions. Luminous Products Will Retain Their Properties Without Experiencing Cracking, Delamination, Discoloration Or Yellowing.

Conditions For Warranty Coverage:

- The Painted Surfaces Must Be Original Equipment Manufacturer (OEM) Originals And Fully Cured. The Installation Must Be Carried Out By An Approved Installer.
- The Warranty Explicitly Excludes Film Applied To Non-Painted Surfaces Such As Headlights, Chrome, Or Carbon-Fiber Trim.

Warranty Claims:

- If The Film Fails To Meet The Warranty Terms During Normal Use With Proper Care And Maintenance Within The Warranty Period, The Manufacturer Will Provide Replacement Film To The Installer At No Cost To The Purchaser.
- Any Claims Regarding Our Products Should Be Promptly Reported To The Manufacturer As Soon As They Become Known To The Purchaser. Proof Of Purchase Will Be Required By The Approved Installer To Support Any Warranty Claim

Limitations And Disclaimers:

- The Manufacturer Disclaims Any Liability For Incidental, Special, Consequential, Or Punitive Damages Arising From Defects In The Covered Product.
- The Manufacturer Excludes All Other Express Or Implied Warranties, Including Warranties Of Merchantability And Fitness For A Particular Purpose.
- The Manufacturer's Sole Obligation To The Purchaser, Whether Based On Contract, Negligence, Tort, Or Otherwise, Is As Provided Herein, And Remedies And Damages Are As Specified Herein.
- It Is Essential To Adhere To All Recommended Care And Maintenance Instructions.
- Limited Warranty Coverage Is Void If The Product Has Been Subjected To Abuse Or Improper Care.
- The Manufacturer Assumes No Liability For Damage To The Film Or The Vehicle Resulting From Improper Care.

TEST ITEM	TEST METHOD	STATED VALUE
Total thickness	Micrometer	7.5 mil
Tensile strength at break	ASTM D882	>21.62 Mpa
Elongation at break (%)	ASTM D882	>350%
Gloss	ASTM D523	≥ 94.2 % (60° gloss)
Initial dry peel adhesion	GB/T 2792	136gf/inch
After heat age, peel adhesion	GB/T 2792	2187gf/inch
Anti-yellowing (1000H)	-	ΔE<1.2
Adhered state shrinkage	FTM 14	No shrink
Soap & water	Lab test	Passed
Isopropyl alcohol	Lab test	Passed
Mild acid (pH 9+)	Lab test	Passed
Windshield washer fluid	Lab test	Passed
Unleaded gasoline	Lab test	Passed
Motor oil	Lab test	Passed
Heat aging	Lab test	Passed
Accelerated weathering	Lab test	Passed
Chip resistance	Lab test	Passed
Sharpie marker	Lab test	Passed
Brass Brush (Lincoln Electric KH582)	Lab test	Passed
Base	-	TPU
Glue Type	-	Ashland
Length	-	15 M
Raw Material	-	BASF Resins
Warranty	-	5 Years

